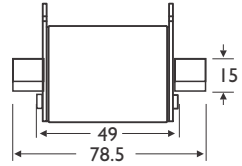
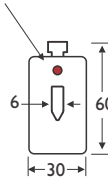


Part Number	Ampere Rating	Body Size	Total I ² t at rated voltage
I70M2673	20A	00	110
I70M2674	25A	00	210
I70M2675	32A	00	390
I70M2676	35A	00	500
I70M2677	40A	00	760
I70M2678	50A	00	1 550
I70M2679	63A	00	2 750
I70M2680	80A	00	5 900
I70M2681	100A	00	11 500
I70M2682	125A	00	22 000
I70M2683	160A	00	45 000
I70M2684	200A#	00	86 500
I70M2685	225A#	00	115 000



Trigger Indicator



Dimensions in MM

I.R.: 125kA at rated voltage

Voltage: 1000VAC (20A to 160A)
900VAC (200A to 225A)#

Operating Class: aR

Pack Size (box): 3

Holders: Fuse Bases (contact sales for details)

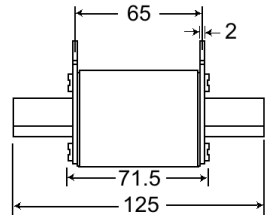
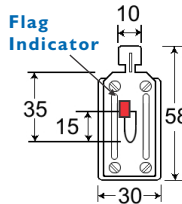
Accessories: NH-Extractor (p150)

Approvals: DIN IEC CE

NH BLADE SEMICONDUCTOR FUSES 1000V



Part Number	Ampere Rating	Body Size	Total I ² t at 1000V
0-AR016/1000V	16A	0	200
0-AR020/1000V	20A	0	300
0-AR025/1000V	25A	0	390
0-AR032/1000V	32A	0	480
0-AR040/1000V	40A	0	840
0-AR050/1000V	50A	0	1 300
0-AR063/1000V	63A	0	2 320
0-AR080/1000V	80A	0	3 900
0-AR100/1000V	100A	0	8 000
0-AR125/1000V	125A	0	18 300
0-AR160/1000V	160A	0	35 300



Dimensions in MM

I.R.: 200kA at 1000VAC

Voltage: 1000VAC

Operating Class: aR

Pack Size (box): 3

Holders: Fuse Bases (contact sales for details)

Accessories: NH-Extractor (p150)

Approvals: IEC 60269-4