

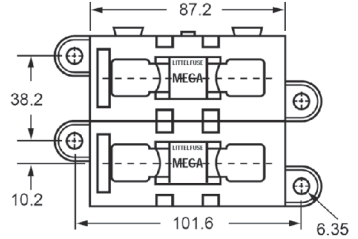
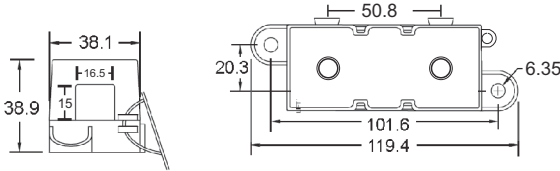
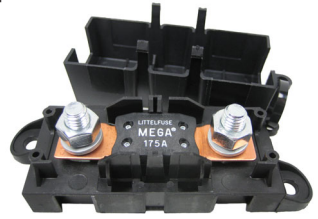
MEGA FUSE BLOCK HARD COVER 70V



The Littelfuse MEGA® Bolt-Down Series High Current Fuse Holder is ideal for battery and alternator connections as well as providing ultra-high current protection for other types of heavy gauge cables. Interlocking pins on the sides let you connect additional fuse holders for multi-fuse applications.

Part Number	Description
02981001	Fuse Block with Hard Cover

Voltage: 70VDC
Rating: 500A
Body & Cover: Black glass filled thermoplastic.
Fuse Block: Includes cover, hex nuts & lock washers.
Studs: M8 threaded. **Torque Rating:** 5 Nm.
Features: Gang mount, stackable side design.
Pack Size: 1, 10, 100
Notes: Fuse is not included.
Approvals: [RoHS](#)



Dimensions in MM

Gang Mount Setup

RELATED PRODUCTS:

32V Mega Fuse
 (see p.25)

70V Mega Fuse
 (see p.25)

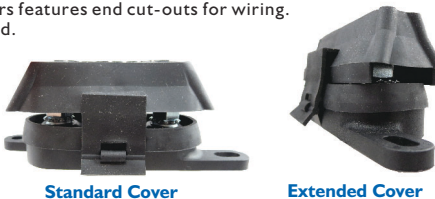
FUSE HOLDERS

MEGA FUSE BLOCKS FLEXIBLE COVER



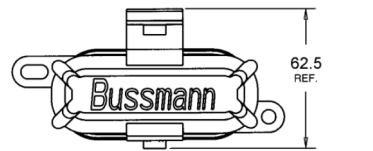
Part Number	Description	
FMG-111	Fuse Block With Standard Cover M8 Studs (a)	NEW
FMG-116	Fuse Block With Extended Cover M8 Studs (b)	
FMG-211	Fuse Block With Standard Cover 5/16"-18 Studs (a)	
FMG-216	Fuse Block With Extended Cover 5/16"-18 Studs (b)	NEW

Rating: 500A
Body: Black UL rated 94V-0 thermoplastic.
Cover: Black flexible thermoplastic elastomer. Red cover optional.
Fuse Block: Includes cover & sems nuts. **Wire Size:** #8 AWG / 8mm²
Studs: Zinc plated steel studs. **Torque Rating:** 13.5 Nm.
Features: Cables can be routed to studs from nearly any direction.
Pack Size: 1, 10, 100
Notes: Both covers features end cut-outs for wiring.
 Fuse is not included.
Approvals: [RoHS](#)



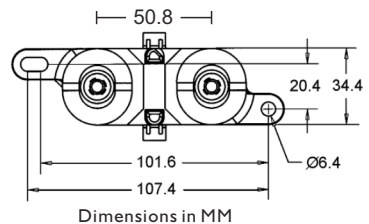
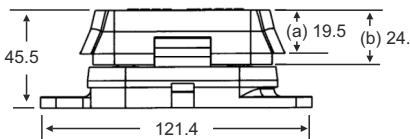
Standard Cover

Extended Cover



RELATED PRODUCTS:

Mega Fuses
 (see p.25)



Dimensions in MM