

# POWER FUSE & FUSED RELAY MODULES

These power distribution modules suit high current applications for placement in extreme moisture and high vibration environments. Multiple units may be connected together using a bus bar. They can also be bussed to Bussmann's other PDM's (RTMR see p. 129-133, ssVEC / ssDVEC see p. 142).



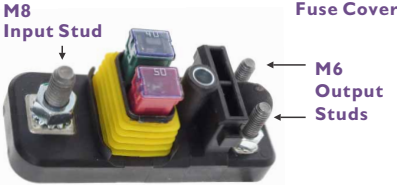
## Power Fuse Module (PFM)

- Housing for 2 fuse positions.
- Each fuse is a separate circuit.
- Removable fuse cover included.

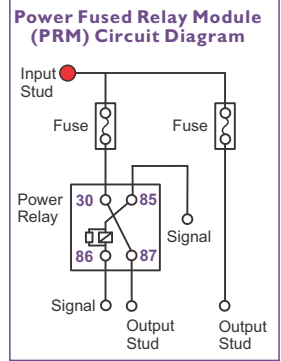
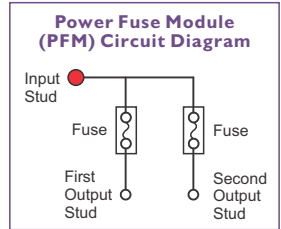


## Power Fused Relay Module (PRM)

- Includes a molded-in High Power Mini relay.
- Housing for 2 fuse positions. One fuse protects the relay and the other is a single-circuit inline fuse.
- Removable fuse cover included.



**Rating (PFM):** Each inline fuse; up to 60A.  
**Relay Rating (PRM):** 70A (12VDC) or 25A (24VDC) steady-state relay.  
**Relay Protection Fuse:** Up to 60A. Non-switched inline fuse; up to 60A.  
**Temperature Rating:** -40 °C to +85 °C.  
**Body:** UL-Rated 94V-0 thermoplastic with silicone seal.  
**Input Termination:** M8 threaded plated steel stud. Includes keps nuts.  
**Output Termination:** 2 x M6 threaded plated steel studs. Inc. keps nuts.  
**Relay Signal Connector Kit:** Only for use with PRM's. (1.0 to 1.5mm<sup>2</sup>) Crimping tool available # CT-P79 contact sales for further information.  
**Ingress Protection Rating:** IP66 (excluding stud connections).  
**Mounting Option:** Counter Rotation Feature (CRF) included to prevent the module rotating on single bolt installations. 6.5x35.4 Mount Hole  
**Bussing:** Use 3771BUS busbars to join multiple PRM's/PFM's. Stud insulator caps included with busbars.  
 Contact sales for options to bus PRM's / PFM's to other Bussmann PDM's.  
**Accessories:** Relay signal connector, bus bars, separators and fuses.  
**Suitable Fuses:** JTFxxx (20A - 0A), not included.  
**Notes:** Each Power Relay Module requires 1 x PRM Relay Signal Connector Kit (50126K) to control the relay. Fusible links are not included.  
**Compliances:** SAE 31171 (Ignition protected).



Part Number	Description
37701-1NN001 I	32V Dual Fuse Only Module Without CRF (PFM)
37701-1NN0025	32V Dual Fuse Only Module With CRF (PFM)
37702-1AN0025	12V Fuse & Fused Relay Module With CRF (PRM)
37703-1AN0025	24V Fuse & Fused Relay Module With CRF (PRM)
50126K	PRM Relay Signal Connector Kit
3771BUS-2	2 Position Bus Bar With Stud Covers
3771BUS-3	3 Position Bus Bar With Stud Covers
3771BUS-4	4 Position Bus Bar With Stud Covers
B162-7003/J	Short Joiners / Output Stud Barriers
B162-7002/J	Long Joiners / Output Stud Barriers

## RELATED PRODUCTS:

**Fusible Links JTF (20A-80A)**  
(See page 21)

**Joiners Barriers**  
Short / Long

**PRM Relay Signal Connector Kit Inc.**  
Terminals 0.75-1.5mm<sup>2</sup>  
Cable seals 1.7-2.4mm

**Bus Bar With Covers 2, 3 & 4 Way**  
Multiple modules can be joined together with these optional Bus Bars.



Scan this QR Code for more information



QR Code: 9002