

3AG SPLASH PROOF FUSE HOLDER

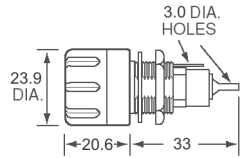
Littelfuse
High Profile Panel Mount

Part Number
03420006H

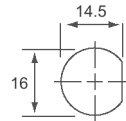
Rating: 20A
Voltage: 250V
Body: Black thermoset
Terminals: Tin plated, copper & copper alloy
Terminal Type: Solder
Knob Type: Finger grip
Seal: O-ring provides a watertight seal on the front side of the panel per MIL-PRF-19207.
Accessories: Includes metal hex nut & two "O" rings.
Panel Thickness: 6.35mm (max)
Flammability: UL 94 V0
Pack Size (bag): 10, 100
Approvals: QPL



Dimensions in MM



Mounting Hole



RELATED PRODUCTS:
Fuses: 3AG/3AB p16-17

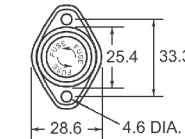


10.3 x 38.1MM FUSE HOLDERS

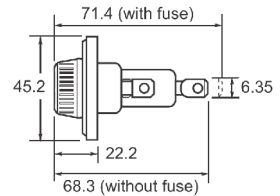
Eaton Bussmann
High Profile Panel Mount

Part Number
HPF

Rating: 30A (20A max when using Q.C. terminals)
Voltage: 600V
Body: Black
Terminals: Q.C. plug (6.35mm) or solder compatible.
Flammability: UL 94 HB
Panel Thickness: Please contact sales.
Pack Size (bag): 1, 10, 100
Approvals:

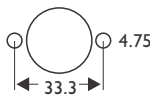


Dimensions in MM



RELATED PRODUCTS:
Fuses: Midget type p71 & 73

Mounting Hole



3AG 32V IN-LINE HOLDER

Prolec

Part Number Holder Type
 155120A Twist Lock Connection

Rating: 20A
Voltage: 32V
Body: Black thermoplastic
Rivets: Tin plated brass
Wire Thickness: 2mm² (#14 AWG)
Wire Length: 200mm loop
Pack Size (bag): 10, 100, 1000
Options: Unassembled version also available.
Notes: Contact sales for further information.



Dimensions in MM

