

With Out Indicator	With Indicator	Ampere Rating	Voltage AC	Voltage DC
FWS-2A20F	FWS-2A20Fi	2A	2100V	1000V
FWS-6A20F	FWS-6A20Fi	6A	2100V	1000V
FWS-8A20F	FWS-8A20Fi	8A	1400V	1000V
FWS-10A20F	FWS-10A20Fi	10A	1400V	1000V
FWS-12A20F	FWS-12A20Fi	12A	1400V	1000V
FWS-15A20F	FWS-15A20Fi	15A	1400V	1000V
FWL-20A20F	FWL-20A20Fi	20A	1200V	1000V
FWL-25A20F	FWL-25A20Fi	25A	1200V	1000V
FWL-30A20F	FWL-30A20Fi	30A	1200V	1000V



I.R.: 45kA at rated VAC, 30kA at 1000VDC
Voltage: See above
Pack Size (box): 10
Holders: Disconnecter CH127-1 (p140)
Approvals: CE IEC



RELATED PRODUCTS: **CH127-1**
Fuse Disconnecter
 # CH127-1

SEMICONDUCTOR

MINING / TRACTION FUSES 1200V

Eaton Bussmann / GEC
Type gR

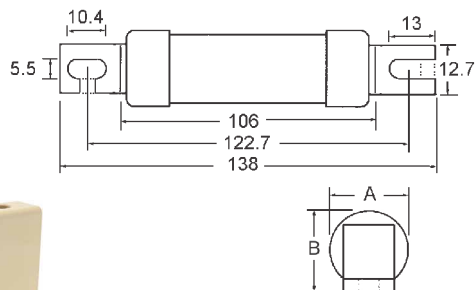
Closed Tag Part Nbr.	Open Tag Part Nbr.	Ampere Rating	Dim. A	Dim. B
-	1HD36	1A	21.8	22.0
TAC2	2HD36	2A	21.8	22.0
TAC4	-	4A	21.8	22.0
TAC6	-	6A	21.8	22.0
TAC10	-	10A	21.8	22.0
TAC16	15HD36	15A / 16A	21.8	22.0
TAC20	20HD36	20A	21.8	22.0
TAC25	-	25A	21.8	22.0
TAC32	-	32A	21.8	22.0
TAC35	-	35A	27.0	27.8
-	40KC36	40A	27.0	27.8
TSC50	-	50A	27.0	27.8
TSC63	-	63A	27.0	27.8



Open Tag HD36 Series



Closed Tag TAC Series



Voltage HD (1A to 30A): 1200VAC / 750VDC
Voltage KC(35A to 60A): 750VDC
Voltage TAC (2A to 32A): 1200VAC / 660VDC
Voltage TSC(35A to 63A): 750VDC
Pack Size (box): 10
Holders: Carrier RSL63H (p129)
Notes: HD and KC series are not recommended for new designs.

RELATED PRODUCTS: **RSL63H**
Fuse Carrier
 # RSL63H

