

UPDATED

A range of NH size fuse links specifically designed for protecting and isolating photovoltaic array combiners and disconnects. These fuse links are capable of interrupting low over currents associated with faulted PV systems (reverse current, multi-array fault).

Features and benefits:

- Compact size saves panel space and extends design flexibility
- Low power loss for greater efficiency and lower operating temperature
- Global agency standards simplifies design considerations for worldwide markets
- Dual indication feature and optional microswitches make system monitoring easier.

Typical applications:

- Recombiner boxes & inverters.



Full Blade



Bolted Tag

Full Blade Part Number	Ampere Rating	Body Size	Total I ² t at 1000V
PV-32ANH1	32A	1	720
PV-40ANH1	40A	1	1 670
PV-50ANH1	50A	1	3 600
PV-63ANH1	63A	1	4 300
PV-80ANH1	80A	1	5 760
PV-100ANH1	100A	1	11 700
PV-125ANH1	125A	1	23 400
PV-160ANH1	160A	1	46 800
PV-200ANH1	200A	1	82 000
PV-160ANH2	160A	2	37 000
PV-200ANH2	200A	2	76 000
PV-250ANH2	250A	2	136 000
PV-300ANH3	300A	3	260 000
PV-315ANH3	315A	3	260 000
PV-350ANH3	350A	3	370 000
PV-355ANH3	355A	3	370 000
PV-400ANH3	400A	3	550 000

Bolted Tag Part Number	Ampere Rating	Body Size	Total I ² t at 1000V
PV-63ANH1-B	63A	1	4 300
PV-80ANH1-B	80A	1	5 760
PV-100ANH1-B	100A	1	11 700
PV-125ANH1-B	125A	1	23 400
PV-160ANH1-B	160A	1	46 800
PV-200ANH1-B	200A	1	82 000
PV-160ANH2-B	160A	2	37 000
PV-200ANH2-B	200A	2	76 000
PV-250ANH2-B	250A	2	136 000
PV-315ANH3-B	315A	3	260 000
PV-355ANH3-B	355A	3	310 000
PV-400ANH3-B	400A	3	490 000

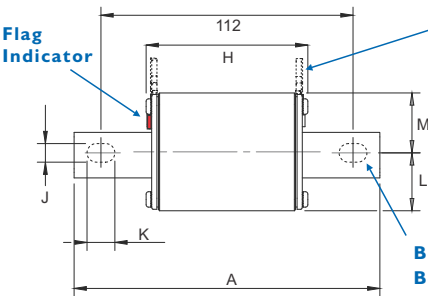
Bolted Tag Fuse Accessories

Notes: Bolt hole and lug version add suffix "BL"
Holders: Blocks (p135)

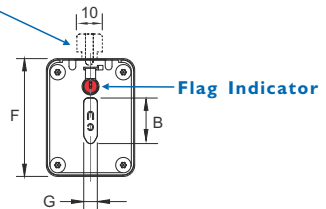
Full Blade Fuse Accessories

Holders: Bases fuse sizes 1, 2, 3 (p139),
Disconnector fuse size 1 (p141)
Microswitch (Type T): 170H0236 (p148)
Accessories: NH-Extractor (p150)

I.R.: 50kA at 1000VDC
Voltage: 1000VDC
Pack Size (box): 3
Min Interrupting Rating: 1.35 x In.
Time Constant: 1-3ms
Approvals: 2579 (File Nbr E335324),
IEC 60269-6

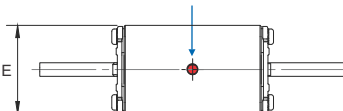


Extractor Lugs
Full Blade and
Bolted Tag with Lug



Bolt Holes on
Bolted Tag Versions Only

Visual Indicator



Body Size	Dimensions for Full Blade & Bolted Tag						Full Blade	Dimensions for Bolted Tag Only					
	A	B	E	F	G	H	H	J	K	L	M		
1	135	20	40	53	6	67	71	8.2	12.3	26	27		
2	150	25	54	61	6	67	71	10.3	15	28	32		
3	150	32	71	76	6	68	73	10.3	15	35	41		

Dimensions in MM