

**AC / BC SERIES (TBC / K09)**

Bussman Part Number	Redspot (660V) Part Number	Ampere Rating	Voltage (VAC)	Voltage (VDC)	Type
AD002	TBC2	2A	550V	250V	gG
AD004	TBC4	4A	550V	250V	gG
AD006	TBC6	6A	550V	250V	gG
AD010	TBC10	10A	550V	250V	gG
AD016	TBC16	16A	550V	250V	gG
AD020	TBC20	20A	550V	250V	gG
AD025	TBC25	25A	550V	250V	gG
AD032	TBC32	32A	550V	250V	gG
BD040	TBC40	40A	500V	250V	gG
BD050	TBC50	50A	500V	250V	gG
BD063	TBC63	63A	500V	250V	gG

**AD / BD Specification**

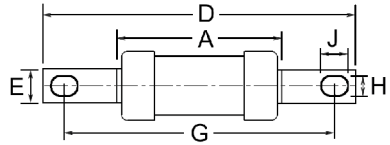
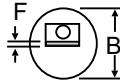
**I.R.:** 80kA at rated VAC  
**Voltage:** VAC (As listed)  
 VDC (As listed)

**Characteristic:** See Type Listing  
**Pack Size (box):** 10  
**Holders:** Please contact sales.  
**Approvals:** BS88, IEC269-1

AD / BD



Centre Tag



**CD SERIES SIZE B1 (TC / L09)**

Bussmann Part Number	Redspot (550V) Part Number	Ampere Rating	Voltage (VAC)	Type
CD080	TC80L	80A	500V	gG
CD100	TC100L	100A	500V	gG
CD100M125	-	100A (125M)	415V	gM
CD100M160	-	100A (160M)	415V	gM
CD100M200	-	100A (200M)	415V	gM

**CD Specification**

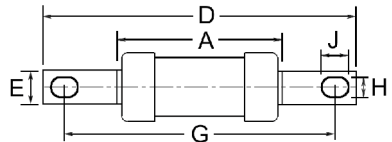
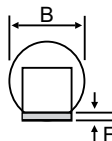
**I.R.:** 80kA at rated VAC  
**Voltage:** VAC (As listed)  
 VDC (Please call)

**Characteristic:** See Type Listing  
**Pack Size (box):** 5  
**Holders:** Please contact sales.  
**Notes:** 660V versions also available contact sales for further information.  
**Approvals:** BS88, IEC269-1

CD



Offset Tag



Dimensions in MM									
Fuse	Ampere Rating	A	B	D	E	F	G	H	J
AD	2A - 32A	55	21	128.5	14.2	1.4	111	8.7	11.8
BD	40A - 63A	55.5	21	128.5	14.2	1.4	111	8.7	11.8
CD	80A - 100A	58.6	21	126	14.3	3.2	111	8.7	11.1
CD	100M125 - 100M160	58	26	126	14.3	3.2	111	8.7	11.1
CD	100M200	47	31	136	19	3.2	111	9	12.5