

# MINI FUSE & MICRO RELAY SEALED MODULE

**EATON** Bussmann

**IP66**

Designed to provide efficient power distribution in a rugged compact form with applications in marine, construction, agriculture, heavy trucking, and specialty vehicle industries. It accommodates a combination of up to 40 x Mini fuse or Mini bladed breakers and 10 x ISO 280 Micro relays. Also features a slot to hold a fuse puller and 4 slots for spare fuses. Optional common bussing for fuses.

**Voltage Rating:** 32VDC

**Ampere Rating:** 200A max.

**Components:** Accepts Mini fuses, Mini bladed circuit breakers and ISO 280 Micro relays.

All components must have 2.8mm blades on 8.1mm centerline spacing.

**Mounting:** Threaded inserts # 10-32 as standard (M5 optional).

Intended for horizontal to vertical mounting orientations.

**Block & Cover:** Black UL-Rated 94V0 thermoplastic. Silicone rubber gasket. Deep cover with internal tether. Cover included with base.

**Cover:** Replacement deep cover available. # B151-7182-1.

Suits Minifuses, ISO 280 Micro relays and Mini bladed circuit breakers.

**Internal Buss:** Plated copper (optional, feeds fuses only)

**Input Studs:** M8 x 1.25 stud (on bussed versions).

**Input Stud Rating:** 100A max per bus bar

**Output Terminal Rating:** 30A max per terminal.

**Ingress Protection Rating:** IP66 (Valid when properly installed with cover, cable seals and cavity plugs).

**Wire Size:** #22 - #12 AWG / 0.35mm<sup>2</sup> - 3mm<sup>2</sup>

**Temperature Rating:** -40°C to +85°C (Module only)

**Terminals:** Delphi Metri-Pack 280 Female Sealed (Tanged)

**Cavity Plugs:** Required to fill unused output cavities for ingress protection.

**Cable Seals:** Please check the overall diameter of your cable before ordering cable seals.

**Terminal Tools:** Terminal crimping & removal tools see pages 185 - 186.

**Ordering:** Block is supplied with cover & one nut for each input stud.

**Pack Size:** 1pc, 20pcs, 100pcs.

**Not Included:** Terminals, cable seals, cavity plugs, mounting brackets or mounting screws.

Module does not include any plug-in components such as fuses, circuit breakers, relays or the fuse puller.

**40 x Mini Fuses or Mini Breakers  
and 10 x ISO 280 Micro Relays.**



## MODULES & COVER OPTIONS :

Part Number	Mini Fuse Positions*	Fuse Bussing	Left Fuse Side	Right Fuse Side	Relay Contents	Nbr of Cavities	Max Nbr of Terminals
I5401-1-2-1-0A	40x Mini Fuses	Dual	Bussed	Bussed	10x ISO 280 Micro	130	90
I5402-1-2-1-0A	40x Mini Fuses	Single	Bussed	Unbussed	10x ISO 280 Micro	130	110
I5404-1-0-1-0A	40x Mini Fuses	No Bus	Unbussed	Unbussed	10x ISO 280 Micro	130	130

**Notes:** \* Mini circuit breakers can be fitted in mini fuse positions. Relays are un-bussed.

## ACCESSORIES:

Part Number	Description
I2084201	Terminal Female (#22-20AWG), 0.35 - 0.5mm <sup>2</sup>
I2077411	Terminal Female (#18-16AWG), 0.80 - 1.0mm <sup>2</sup>
I2129493	Terminal Female (#14-12AWG), 2.0 - 3.0mm <sup>2</sup>
I2077413	Terminal Female (#10AWG), 5.0mm <sup>2</sup>
I5324983	Cable Seal Dark Red, 1.70 - 1.29mm Cable Diameter.
I5324982	Cable Seal Green, 2.85 - 2.03mm Cable Diameter.
I5324980	Cable Seal Grey, 3.49 - 2.81mm Cable Diameter.
I5324981	Cable Seal Blue, 4.30 - 3.45mm Cable Diameter.
I2010300	Cavity Plug Green, 6.7mm Cavity inside Diameter.
PROBRK003	Bracket Stainless Steel, Black Powder Coated, 90° Angle.
TERMKIT003	Terminal MP280 Tanged, Seal & Plug Assortment Kit 310pcs
CAB2.0X85TS1TJ	Red Jumper Cable 1.84mm <sup>2</sup> x 90mm. Tanged (1pc).
B151-7182-1	Replacement Cover. Black Thermoplastic.
32013BS	Mini Fuse & Mini Circuit Breaker Puller.



**Mounting Bracket  
# PROBRK003**



**Terminal Kit  
TERMKIT003  
(see p.187)**



**Tanged Female  
Sealed Terminals**



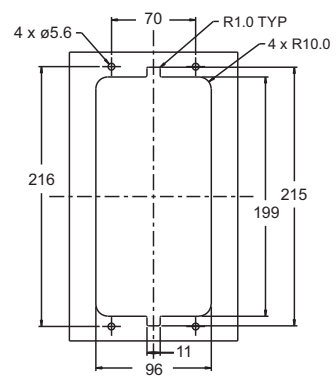
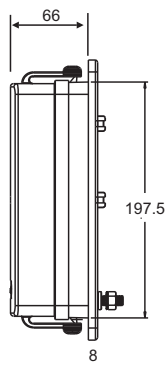
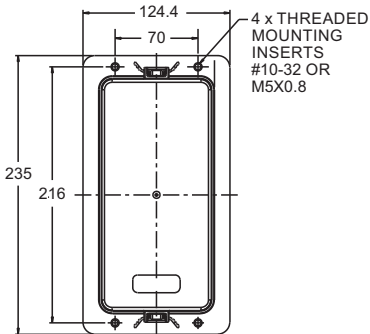
**Cable Seals &  
Cavity Plug**



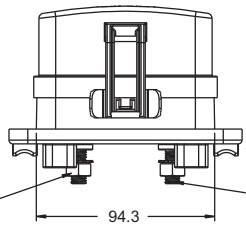
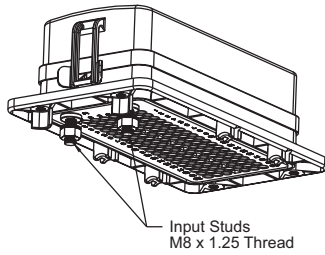
**Terminal Tools  
(see p.185 - 186)**



**Fuse & Breaker  
Puller (see p.44)**



**Panel Cutout Diagram**  
(Mount from the rear of the panel)



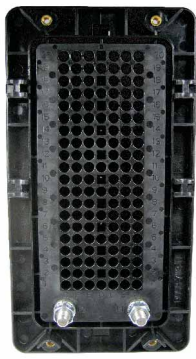
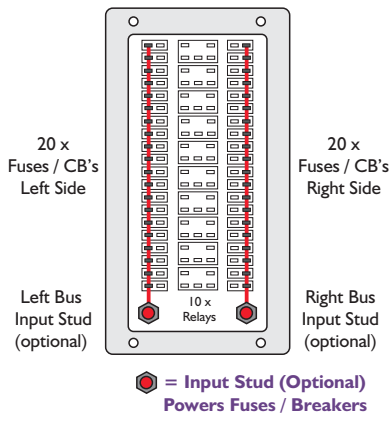
Cable Managers - Options shown on this drawing only

Dimensions in MM

**Input Stud Power Diagram**

**Rear View - Inputs / Outputs**

**Front View - Component Loading**



**Dual Bus Version Pictured Above**



**Unloaded RFMR Pictured Above**

POWER DIST.

**RELATED PRODUCTS:**



**Mini Fuses, Mini Resistors, Mini Transistors & Mini Blade Circuit Breakers.**



**ISO 280 Micro Relays 4 or 5 Pin. 12V or 24V (see p. 164)**



**Tanged Pre-Terminated Cables, Jumpers & Butt Splice Connectors. (see p. 186)**