

# TERMINAL BLOCKS DIN RAIL MOUNT



MORSETTITALIA

Part Number	Product Description	Conductor	Pack Size	Colour
43408	Terminal block 24A, 1000V (Inputs / Out)	Flexible (0.5-2.5mm <sup>2</sup> ), Rigid (0.5-4mm <sup>2</sup> )	1/100	Grey
43409	Terminal block 32A, 1000V (Inputs / Out)	Flexible (0.5-4mm <sup>2</sup> ), Rigid (0.5-6mm <sup>2</sup> )	1/100	Grey
43409BL	Terminal block 32A, 1000V (DC Control)	Flexible (0.5-4mm <sup>2</sup> ), Rigid (0.5-6mm <sup>2</sup> )	1/100	Blue
43409E	Terminal block 32A, 1000V (Earth)	Flexible (0.5-4mm <sup>2</sup> ), Rigid (0.5-6mm <sup>2</sup> )	1/100	Ylw / Gr
43401	Terminal block 41A, 1000V (Inputs / Out)	Flexible (0.5-6mm <sup>2</sup> ), Rigid (0.5-10mm <sup>2</sup> )	1/50	Grey
43525/24	Jumper (pitch 5.1mm) 25A, 600V	Flexible (2.5mm <sup>2</sup> )	1/5	Orange
43520/24	Jumper (pitch 6.1mm) 25A, 600V	Flexible (4mm <sup>2</sup> )	1/5	Yellow
43621/24	Jumper (pitch 7.1mm) 50A, 600V	Flexible (6mm <sup>2</sup> )	1/5	Green
43010	End plate (1.5mm wide), Suit Euro 2.5 - Euro 4		1/100	Grey
43011	End plate (1.5mm wide), Suit Euro 6 - Euro 10		1/100	Grey
43444	End bracket (stop modules sliding on DIN rail)		1/100	Grey
43300	Marking tags. Printed numbers 1-10 (2 sets)		1/25	White
43310	Marking tags. Printed numbers 1-100 (1 set)		1/5	White
43311	Marking tags. Printed numbers 101-200 (1 set)		1/5	White
43192	Marking tags. Blank stem. 1 stem = 20 Marking Tags.		1/25	White

**Connection:** Slot screw terminals. **Mounting:** DIN Rail 35.  
**End Plates:** The blocks feature 1 x open and 1 x closed wall so only one End Plate is required to finish either a single module or multiple adjoining modules.  
**Jumpers:** Jumpers can be used to share power from one input cable across multiple modules and are supplied in strips of 24. Ratchet jumper cutting tools also available contact sales.  
**End Stop:** These modules feature a screw which tightens onto the DIN rail to stop modules sliding along the rail.  
**Accessories:** Euro Omega DIN 35 Rails. Angled rail brackets. Protection covers. Test plugs. Complete range of marking tags.  
**Colour Options:** Blue, Yellow/Green, Yellow, Orange, Red, Green, Black, Brown and White.  
**Extended Range:** Terminal blocks to suit 10mm<sup>2</sup>, 25mm<sup>2</sup>, 50mm<sup>2</sup>, 70mm<sup>2</sup>, 95mm<sup>2</sup> cable sizes are also available.  
**Notes:** Contact sales for further information.  
**Approvals:**



**43408 Terminal Block 2.5mm<sup>2</sup>**  
 44 (L) x 36 (H) x 5mm (W)  
 Connecting capacity: 12mm (CC)



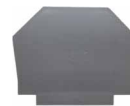
**43409 Terminal Block 4mm<sup>2</sup>**  
 44 (L) x 36 (H) x 6mm (W)  
 Connecting capacity: 12mm (CC)



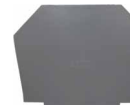
**43401 Terminal Block 6mm<sup>2</sup>**  
 50 (L) x 44 (H) x 7mm (W)  
 Connecting capacity: 18mm (CC)



**43444 - End Bracket**  
 55 (L) x 34 (H) x 6mm (D)



**43010 - End Plate, Euro 2.5-4**  
 44 (L) x 35 (H) x 1.5mm (D)



**43011 - End Plate, Euro 6-10**  
 50 (L) x 43 (H) x 1.5mm (D)

**Marking Tags**  
 1 Stem # 43300



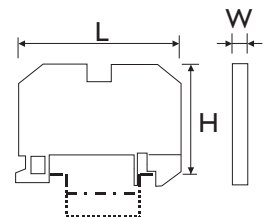
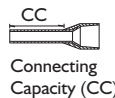
**43525/24 - Insulated Jumper (2.5mm<sup>2</sup>)**  
 Note: Optional cutting tool P/N: 43515



**43520/24 - Insulated Jumper (4mm<sup>2</sup>)**  
 Note: Optional cutting tool P/N: 43516



**43621/24 - Insulated Jumper (6mm<sup>2</sup>)**  
 Note: Can be separated by hand, no tools required.



POWER DIST.