

STUD TYPE JUNCTION BLOCKS - FEED THROUGH

Feed-Through blocks are designed to be used on a firewall or panel.



C1925B
1/2"-13 Stud



C1925
1/2"-13 Stud



C1925-2B
3/8"-16 Stud



C1925-2
3/8"-16 Stud



C1938-1
5/16"-18 Stud



C1938-1R
5/16"-18 Stud



C1938
3/8"-16 Stud



C1938R
3/8"-16 Stud



C2791
1/4"-20 Stud



C2791-R
1/4"-20 Stud

Part Number	Body Colour	Amp Rating	Thread Size M	Stud Mat.	Stud Plating	Stud Dia.	Dimensions in MM										
							A	B	C	D	E	F	G	H	J	K	
C1925B	Black	400A	1/2"-13	Brass	Zinc	1	69.8	38.1	31.7	31.7	28.6	9.5	28.6	4.8	4.8	50.8	
C1925	Red	400A	1/2"-13	Brass	Zinc	1	69.8	38.1	31.7	31.7	28.6	9.5	28.6	4.8	4.8	50.8	
C1925-1B	Black	400A	1/2"-13	Brass	Tin	1	69.8	38.1	31.7	31.7	28.6	9.5	28.6	4.8	4.8	50.8	
C1925-1	Red	400A	1/2"-13	Brass	Tin	1	69.8	38.1	31.7	31.7	28.6	9.5	28.6	4.8	4.8	50.8	
C1925-2B	Black	250A	3/8"-16	Brass	Tin	1	69.8	38.1	31.7	31.7	28.6	9.5	28.6	4.8	4.8	50.8	
C1925-2	Red	250A	3/8"-16	Brass	Tin	1	69.8	38.1	31.7	31.7	28.6	9.5	28.6	4.8	4.8	50.8	
C1938-1	Black	200A	5/16"-18	Brass	Tin	2	52.4	23.8	17.5	22.2	17.5	7.9	23.8	1.6	1.6	33.3	
C1938-1R	Red	200A	5/16"-18	Brass	Tin	2	52.4	23.8	17.5	22.2	17.5	7.9	23.8	1.6	1.6	33.3	
C1938	Black	250A	3/8"-16	Brass	Zinc	2	52.4	23.8	17.5	22.2	17.5	7.9	23.8	1.6	1.6	33.3	
C1938R	Red	250A	3/8"-16	Brass	Zinc	2	52.4	23.8	17.5	22.2	17.5	7.9	23.8	1.6	1.6	33.3	
C2791	Black	100A	1/4"-20	Brass	Zinc	3	52.4	17.5	11.2	15.9	17.5	7.9	17.5	1.6	1.6	33.3	
C2791-R	Red	100A	1/4"-20	Brass	Zinc	3	52.4	17.5	11.2	15.9	17.5	7.9	17.5	1.6	1.6	33.3	

POWER DIST.

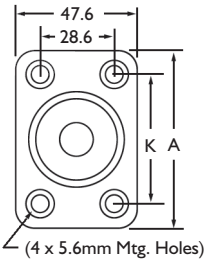


Diagram 1

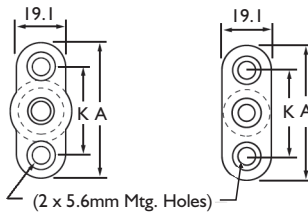
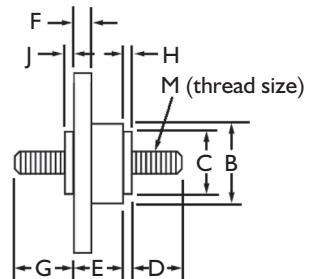


Diagram 2



Diagram 3



Voltage: AC / DC

Body: Thermoplastic

Studs: Brass

Mounting Torque Rating: 5.4Nm max.

Hardware: Hex nut & spring washer supplied in bulk. Also available without hardware.

Pack Size: 1, 10, 50, 100