

3 WAY PASS THROUGH DISTRIBUTION BLOCK

NEW

Designed to meet multiple power / ground requirements, the GB3000 provides 3 pass-thru M6 studs for easy cable attachment in both the cabin and engine compartment of your vehicle. These blocks provide robust connections, eliminates the need to stack cables and reduces associated warranty claims based on affiliated problems. The GB3000 also provides power distribution suitable for many feed thru applications in marine, construction, agriculture, bus, military, RV and specialty vehicles.

The GB3000 series block includes 2 bus bars (removable) to create a common single circuit across the 3 feed thru studs. The GB3001 series block does not include the 2 bus bars, provides power or ground feed thru for 3 individual circuits, one for each stud.

Part Number	Block Description	Current Rating	Body Colour
GB3000-1R	Single Circuit Feed Thru	200A Max Total	Red
GB3000-1B	Single Circuit Feed Thru	200A Max Total	Black
GB3001-1R	3 Circuit Feed Thru	60A Max Per Stud	Red
GB3001-1B	3 Circuit Feed Thru	60A Max Per Stud	Black



GB3000-1R



GB3000-1B

Amperage: See above.

Temperature Rating: -40°C to 85°C

Hardware: M6 nuts included.

Torque: M6 stud & mounting 5.6Nm max.

Current Carrying Studs: Zinc-plated brass.

Mounting Studs: Stainless steel.

Housing: Black UL rated 94V0 thermoplastic.

Cover Colours: Black or red.

Cover Material: Santoprene cover rated 94V0 for protection from accidental shorts.

Gasket: Included for ingress protection. Black santoprene gasket rated 94V0.

Approvals: 

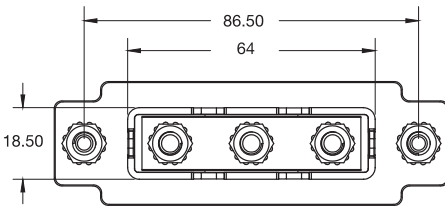
**Circuit Diagram
Single Circuit Feed
GB3000**



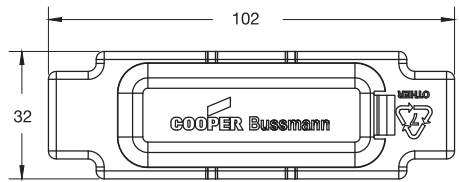
**Circuit Diagram
3 Circuit Feed
GB3001**



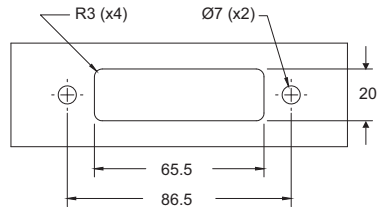
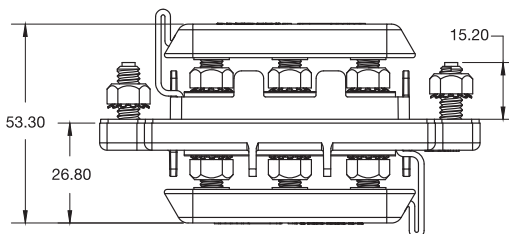
POWER DIST.



Pictured Without Cover



Dimensions in MM



Panel Cutout