

# COMMON BUSBARS WITH COVER & LABELS



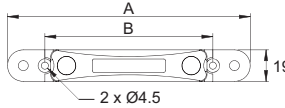
- Heavy-duty busbars for ground or power connection points for DC circuits.
- Ideal for creating a centralized power distribution or grounding point.
- Compact profile with insulated base.
- All common busbars include sticker set and mounting hardware.



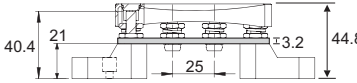
Mounting Hardware Sticker Set

## Single Row Busbar With M6 Studs

Part Number	Busbar Studs	Dimensions in MM	
		A	B
BB4M6	4 x M6	146	101
BB6M6	6 x M6	206	161

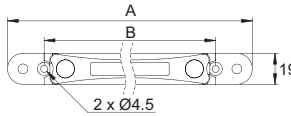


**Voltage:** 48VDC max. **Rating:** 100A  
**Body:** Nylon, glass fibre reinforced.  
**Bus Material:** Brass.  
**Studs & Hardware:** Stainless steel (inc).  
**Cover:** Transparent (included).

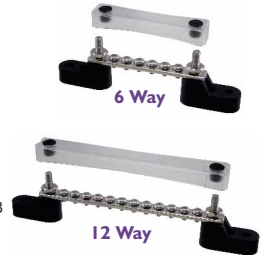
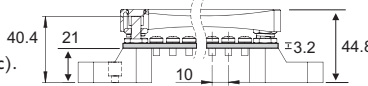


## Single Row Busbar With M6 Studs & M4 Screws

Part Number	Busbar Screws	Dimensions in MM	
		A	B
BB6M4	6 x M4	146	101
BB12M4	12 x M4	206	161



**Voltage:** 48VDC max. **Rating:** 150A  
**Body:** Nylon, glass fibre reinforced.  
**Bus Material:** Copper, Tin plated.  
**Studs:** 2 x M6 (1/4")  
**Studs & Hardware:** Stainless steel (inc).  
**Cover:** Transparent (included).

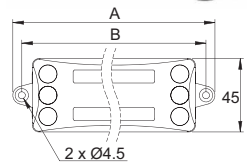
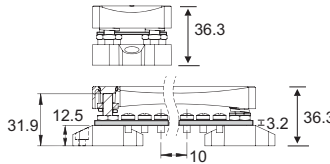


## Dual Row Busbar With M6 Studs & M4 Screws

Part Number	Bus Bar	Busbar Screws	Dimensions in MM	
			A	B
BBD6M4	Dual	2 x 6 x M4	118	107
BBD12M4	Dual	2 x 12 x M4	178	167



**Voltage:** 48VDC max. **Rating:** 150A  
**Body:** Nylon, glass fibre reinforced.  
**Bus Material:** Copper, Tin plated.  
**Studs:** 4 x M6 (1/4")  
**Studs & Hardware:** Stainless steel (inc).  
**Cover:** Transparent (included).  
**Features:** Removable connecting link to separate or join the 2 bus bars.

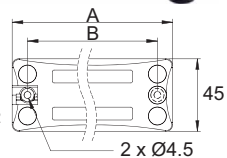
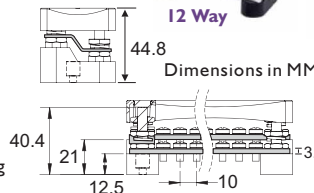


## Dual Row Busbar Stepped With M6 Studs & M4 Screws

Part Number	Bus Bar	Busbar Screws	Dimensions in MM	
			A	B
BBD6M4S	Dual	2 x 6 x M4	94	75
BBD12M4S	Dual	2 x 12 x M4	154	135



**Voltage:** 48VDC max. **Rating:** 150A  
**Body:** Nylon, glass fibre reinforced.  
**Bus Material:** Copper, Tin plated.  
**Studs:** 4 x M6 (1/4")  
**Studs & Hardware:** Stainless steel (inc).  
**Cover:** Transparent (included).  
**Features:** Stepped design, removable connecting 'Z' link to separate or join the 2 bus bars.



POWER DIST.



Email: [info@prolegproducts.com.au](mailto:info@prolegproducts.com.au)  
 Web: [www.prolegproducts.com.au](http://www.prolegproducts.com.au)