

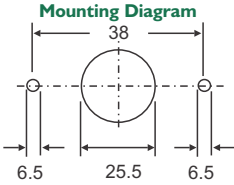
EMERGENCY BATTERY DISCONNECT SWITCH 12-24VDC



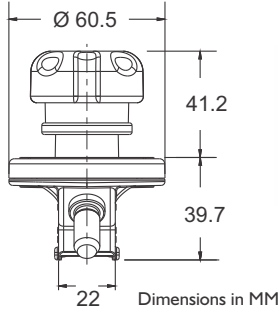
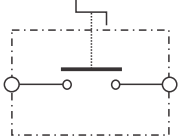
Emergency Manual Battery Disconnect Switch with ROTATE to SWITCH ON & PUSH KNOB to SWITCH OFF in the event of an emergency. Switch status is indicated through a window on the top of the knob.

NEW

Part Number	Amperage	Intermittent Current	Circuitry	Ingress Rating	Mounting	Copper Terminals	Notes
08080200	150A	1200A at 5s	SPST	IP65	Through-Hole	M10 Ag Plated	Push to Off



Mounting Diagram



Top View of Knob

Push to turn OFF

Turn to switch ON



EMERGENCY BATTERY DISCONNECT SWITCH 12-24VDC



The Littelfuse Emergency Battery Disconnect Switch features a TURN to SWITCH ON and PUSH to OFF operation. Easy to operate and shut off vehicle power in emergency situations. Switch features an identical mounting pattern to metal body removable key switches, so the same application has multiple options with minimal design changes.

NEW

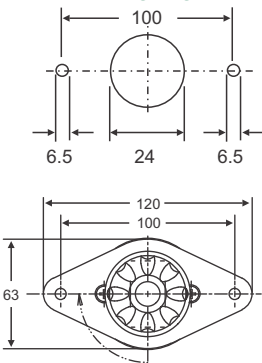
IP65

Features

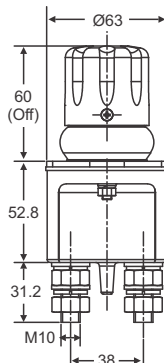
- 250A continuous current rating.
- Waterproof and dust proof to IP65.
- Push to off emergency shutdown feature.
- Highly visible bright red handle.

Part Number	Amperage	Intermittent Current	Circuitry	Ingress Rating	Mounting	Brass Terminals	Notes
08098400	250A	2500A at 3s	SPST	IP65	Flange	M10 Ag Plated	Push to Off

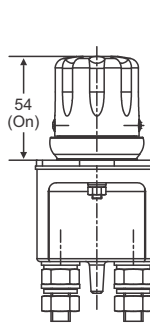
Mounting Diagram



Push to turn OFF

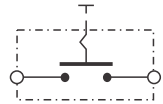


Turn to switch ON



Dimensions in MM

Electrical Diagram



RELAY + SWITCH