

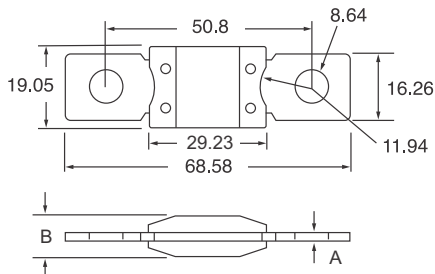
# MEGA FUSE / AMG 32V

Littelfuse / Bussmann  
Slow Acting

Designed for high current circuit protection up to 500A.  
Ideal for battery and alternator connectors and other heavy gauge cables requiring ultra-high current protection.



Part Number	Ampere Rating	Font Colour	Dimensions in MM	
			A	B
MEG040	40A	White	1.02	9.9
MEG060	60A	White	1.02	9.9
MEG080	80A	Red	1.02	9.9
MEG100	100A	Yellow	1.02	9.9
MEG125	125A	Green	1.02	9.9
MEG150	150A	Orange	1.02	9.9
MEG175	175A	White	1.02	9.9
MEG200	200A	Blue	1.02	9.9
MEG225	225A	Tan	1.02	9.9
MEG250	250A	Pink	1.02	9.9
MEG300*	300A	Grey	1.83	10.67
MEG350*	350A	Green	1.83	10.67
MEG400*	400A	Purple	1.83	10.67
MEG450*	450A	Orange	1.83	10.67
MEG500*	500A	Brown	1.83	10.67



I.R.: 2kA at 32VDC

Voltage: 32VDC

Pack Size: 1, 10, 100

Holders: Inline, Blocks & Power Dist. Unit.

Mounting: M8 or 5/16" studs

Options: Window element (40A-250A), 58V & 70V

High Performance, UL recognized (80A-175A).

Notes: 40A & 60A are silver plated copper.

\* Short circuit protectors only.

Approvals: ISO 8820-5 RoHS

Time Characteristic % of Amp Rating	Opening Time (Min/Max)	
	40A - 250A	300A - 500A
75%	-/-	4hrs/-
100%	4hrs/-	-/-
135%	120sec/1800sec	-/-
200%	1sec/15sec	1sec/15sec
350%	0.3sec/5sec	0.5sec/5sec
600%	0.1sec/1sec	-/-



Spare Pack (SP):

Contain 1pc of one rating.

# POWERVAL CALIBRE FUSE 32V

MTA  
Slow Acting

Designed for high current circuit protection. They are used to protect starter cables. Ideal for starter and alternator connectors. These fuses allow the load of a starter motor or winch to operate without blowing the fuse, however they will open in the case of a direct short.

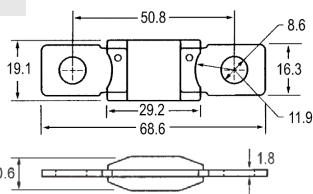


Part Number	Continuous Rated Current	Minimum Melting Current	Maximum Melting Current	Body Colour	Cable Size (mm <sup>2</sup> )
POWCAL1	150A	380A	2000A	Grey	16
POWCAL2	150A	400A	2000A	Black	25
POWCAL3	180A	530A	2000A	Red	50
POWCAL4	180A	600A	2000A	Lt. Brown	50
POWCAL5	180A	700A	2000A	Dk. Brown	50

Scan this QR Code for more information



QR Code: 3004



I.R.: 2000A at 32VDC

Voltage: 32VDC

Material: (POWCAL1-2) Tin Plated Zinc Alloy.  
(POWCAL3-5) Tin plated Copper.

Pack Size: 1, 10, 100

Holders: Inline, Blocks, Power Dist. Unit.

Mounting: M8 or 5/16" studs

Dimensions in MM