

ELECTRIC VEHICLE AUXILIARY FUSES AE2 500V

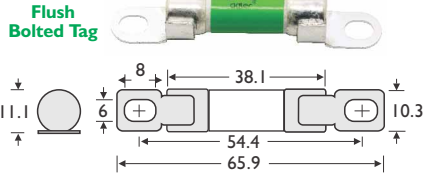
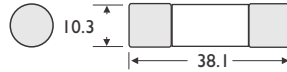


General purpose fuse for EV / HEV auxiliary protection.

Cartridge

Part Number	Part Number	Ampere Rating
AE22100607	AE22100605	10A
AE22150607	AE22150605	15A
AE22200607	AE22200605	20A
AE22250607	AE22250605	25A
AE22300607	AE22300605	30A
AE22350607	AE22350605	35A
AE22400607	AE22400605	40A
AE22500607	AE22500605	50A

Ferrule Cartridge



Voltage: 500VDC **I.R.:** 20kA at 500VDC.

Time Constant: 1-3ms

Holders (Cartridge): Clips, Blocks & Inline.

Holders (Flush Bolted): Fuse block.

Terminal Options: PCB Mount & Centre tag.



Approvals: UL 248-20, TUV, ISO 8820-8; GB/T 31465.6

RELATED PRODUCTS:

Fuse Clips

BC800 (see p.68)



Cartridge Fuse Block

BH114-1C (see p.102)

BH114-CN (see p.102)



Flush Tag Fuse Block

BH114-1M (see p.102)

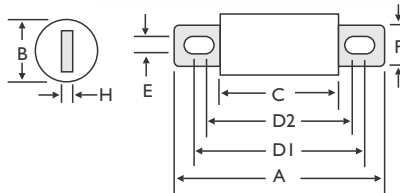
BH114-CN (see p.102)



ELECTRIC VEHICLE PDU FUSES AE5 500V

Special purpose fuse for EV / HEV automotive use. Ideal for high power EV PDU and battery protection. 500VDC EV high-speed power fuse.

Part Number	Ampere Rating
AE52500620	50A
AE52600620	60A
AE52700620	70A
AE52800620	80A
AE53100620	100A
AE53125620	125A
AE53150620	150A
AE53100625	100A
AE53125625	125A
AE53150625	150A
AE53175625	175A
AE53200625	200A
AE53225625	225A
AE53250625	250A
AE53200631	200A
AE53225631	225A
AE53250631	250A
AE53300631	300A
AE53350631	350A
AE53400631	400A
AE53400638	400A
AE53500638	500A
AE53500651	500A
AE53600651	600A
AE53700651	700A



Dimensions in MM

Series	Amperage	A	B	C	D1	D2	E	F	H
AE5...620	50A-150A	81	21	40	66	57	8.5	15	3.2
AE5...625	100A-250A	89	25	44	73	71	9.0	18	3.2
AE5...631	200A-400A	92	31	53	76	69	8.5	22	5
AE5...638	400A-500A	110	38	53	88	70	10.5	24.8	6
AE5...651	500A-700A	110	51	53	90	71	10.5	38	6

I.R.: 50kA (Self Cert.), 30kA (TUV) at 500VDC

Voltage: 500VDC

Time Constant: (L/R) 2 +/- 0.5ms

Ref: JASO D622, ISO 8820-8, GB/T 31465

Approvals: TUV (50A-400A)

RELATED

PRODUCTS:



Fixed EV Fuse Blocks

(see p103.)



Modular Fuse Blocks

(see p104.)