

LV FUSE CLIPS BOARD MOUNT

PROLEG

NEW

Part Number	Holder	Fuse Type	Rating	Orientation	Mounting Method
FC-MINV	Clip	Mini Blade	15A	Vertical	Thru Hole Mount
FC-MINH	Clip	Mini Blade	15A	Horizontal	Thru Hole Mount
FC-ATOV	Clip	Auto Blade	15A	Vertical	Thru Hole Mount
FC-ATOH	Clip	Auto Blade	15A	Horizontal	Thru Hole Mount
FC-MAXV	Clip	Maxi Blade	50A	Vertical	Thru Hole Mount
FCB-26	Board	Mini Blade	15A	Vertical	Thru Hole Mount
FCB-25	Board	Auto Blade	20A	Vertical	Thru Hole Mount

Material: Tin plated spring brass.
Pack Size: Varies, please contact sales.
Note Clips: 2pcs required per fuse.
Data Sheet: Contact sales

Approvals: 



Mini Fuse Board THM



Auto Fuse Board THM



Mini Clips Vertical



Mini Clips Horizontal



Auto Clip Vertical



Auto Clips Horizontal



Maxi Clips Vertical

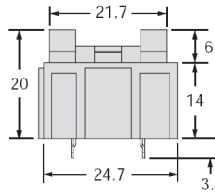
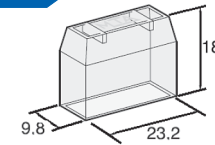
AUTO FUSE HOLDER BOARD MOUNT

MTA

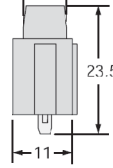
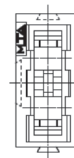
Part Number	Description
00420	Fuse holder
00359	Clear cover

Rating: 15A **Voltage:** 32V
Body: Black PA66, UL94 V2.
Mounting: Thru Hole Mount.
Cover: Transparent PC
Terminals: Tin plated phosphor bronze, Inox-steel clip included.
Feature: Stackable end or side.
Pack Size: 1, 10, 100, 1000
Notes: Auto fuse is not included.

Mounting Pattern



Dimensions in MM




RELATED PRODUCTS: **Auto Fuse** (see p.17)



EV CARTRIDGE FUSE CLIPS 10.3MM DIAMETER

Part Number	Mounting Type
BC800	Thru Hole Mount

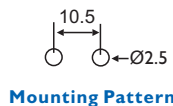
Rating: 32A
Voltage: 250V-1500V
Clip Material: Brass, Tin plated.
Clip Size (bag): 2, 10, 100, 1000
Feature: Fuse end stop
Suits EV Cartridge Fuse: 10.3 x 38.1mm.
Approvals: 



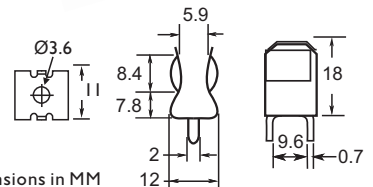
RELATED PRODUCTS: **EV Cartridge Fuses** (see p.32 -34)



adler



Dimensions in MM



Dimensions in MM