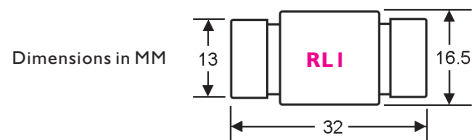


CARTRIDGE FUSES RL1

Prolec
Fast Acting, Type gG/gL

Part Number	Ampere Rating
SWE-RL1002	2A
SWE-RL1004	4A
SWE-RL1006	6A
SWE-RL1010	10A
SWE-RL1015	15A

I.R.: 20kA at 380VAC
Voltage: 380VAC / 400VDC
Pack Size (bag): 10, 50, 100, 1000.
Approvals: GB13539 IEC60269 and VDE0636 Standard
Features: Blown fuse visual indicator.



NEOZED

ETI
Fast Acting, Type gG/gL

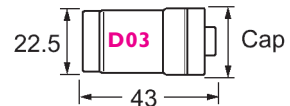
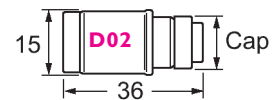
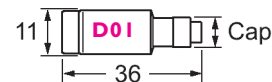
Part Number	Ampere Rating	Indicator Colour	Body Size/ Fuse Base	Cap Diameter
SWE-NEO-NB002	2A	Pink	D01 / E14	7.3mm
SWE-NEO-NB004	4A	Brown	D01 / E14	7.3mm
SWE-NEO-NB006	6A	Green	D01 / E14	7.3mm
SWE-NEO-NB010	10A	Red	D01 / E14	8.5mm
SWE-NEO-NB016	16A	Grey	D01 / E14	9.7mm

SWE-NEO-NB020	20A	Blue	D02 / E18	10.9mm
SWE-NEO-NB025	25A	Yellow	D02 / E18	12.1mm
SWE-NEO-NB035	35A	Black	D02 / E18	13.3mm
SWE-NEO-NB050	50A	White	D02 / E18	14.5mm
SWE-NEO-NB063	63A	Copper	D02 / E18	15.9mm

SWE-NEO-NB080	80A	Silver	D03 / M30x2	21.4mm
SWE-NEO-NB100	100A	Red	D03 / M30x2	21.4mm

I.R.: 50kA at 400VAC
 8kA at 250VDC
Voltage: 400VAC / 250VDC
Pack Size (box): 10
Holders: Please contact sales
Features: Blown fuse visual indicator.

Approvals: CE



INDUSTRIAL

BOTTLE FUSES - JAPANESE STANDARD

Fuji
Fast Acting

Part Number	Ampere Rating	Indicator Colour	I.R. at 600VAC	Cap Diameter	Diagram
SWE-BLA003	3A	Pink	100kA	8mm	1
SWE-BLA005	5A	Brown	100kA	8mm	1
SWE-BLA010	10A	Red	100kA	8mm	1
SWE-BLA015	15A	Grey	100kA	10mm	1
SWE-BLA020	20A	Blue	100kA	10mm	1
SWE-BLA030	30A	Violet	100kA	14mm	1
SWE-BLA040	40A	Black	100kA	16mm	2
SWE-BLA060	60A	Light Red	100kA	20mm	2

Voltage: 600VAC/VDC
Pack Size (box): 10
Features: Blown fuse visual indicator

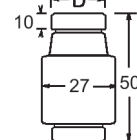
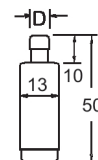


Diagram 1

Diagram 2