

AUTOMOTIVE BLADE & CARTRIDGE FUSE PULLERS

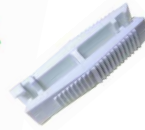
Protec

Part Number	Extracts
00970025	Micro2 Leg Fuse & Micro3 Leg Fuse
097021	Mini Fuse, Low Profile Mini Fuse & Auto Fuse
FP-7AM	Mini Fuse, Low Profile Mini Fuse & Auto Fuse
FP-A3	Ferrule Cartridge Fuse 'AG' Type & Auto Fuse
00970054	Mcase Fusible Link
00970026	Maxi Fuse

00970025



097021



FP-7AM



FP-A3



00970054



00970026



Pack Size: 1, 10, 100

Notes: For dimensions please contact sales. Fuse pullers allow the user to quickly and easy remove a fuse without damaging the fuse block terminals. They can also be used to replace a fuse.

AUTOMOTIVE BLADE FUSE PULLER & TESTER

Eaton Bussmann

Part Number
FT-3

The FT-3 combination fuse tester and fuse puller is designed for easy one-handed use. It tests glass and blade fuses in or out of the fuse block. This continuity tester is for fuses in circuits up to 24V maximum. Light glows when fuse is good. For easy fuse removal and replacement. Prevents fuse clip, terminal & holder damage.

Extracts: Low Profile Minifuses, Minifuses & Autofuses.
Pack Size: 1, 10, 100



CARTRIDGE FUSE PULLERS

Eaton Bussmann

Part Number	Fuse Diameter Metric	Fuse Diameter Imperial
MFP	4.76 to 12.7 MM	3/16" to 1/2"
FP-2	10.3 to 20.6MM	13/32" to 13/16"
FP-6	10.3 to 25.4MM	13/32" to 1"
FP-3	25.4 to 44.4MM	1" to 1-3/4"
FP-4	44.4 to 63.5MM	1-3/4" to 2-1/2"

MFP



FP-2



FP-6



FP-3



FP-4



Extracts: Ferrule cartridge, USA blade industrial fuses.
Pack Size: 1, 10

NH BLADE FUSE EXTRACTOR

Eaton Bussmann & ETI

Part Number	Extracts Fuse Type & Body Size
NH-EXTRACTOR	NH Fuses 000 (00C), 00, 0, 1, 2, 3 & 4.
FEH-1500	XL PV Fuses 01XL, 1XL, 2XL, 3L NEW

NH-EXTRACTOR

FEH-1500

Pack Size: 1



Fuse pullers are only to be used when the associated circuit has been de-energized.

