

<p>Single Pole Disconnect Switches (Fuse sizes 000 to 3)</p> <p>&gt; <a href="#">Page 2</a></p> 	<p>Three Pole Disconnect Switches (Fuse sizes 000 to 3)</p> <p>&gt; <a href="#">Page 3</a></p> 
<p>Front Cover Open / Closed Signal Switch</p> <p>&gt; <a href="#">Page 5</a></p> 	<p>Assembly Kits to Create a 2 or 4 Pole Holder</p> <p>&gt; <a href="#">Page 5</a></p> 
<p>Front Cover Padlock Security Fittings</p> <p>&gt; <a href="#">Page 5</a></p> 	<p>Upper &amp; Lower Holder Extension Covers</p> <p>&gt; <a href="#">Page 5</a></p> 
<p>Busbar Fittings Top / Rear Connection of Multiple Holders</p> <p>&gt; <a href="#">Page 6</a></p> 	<p>Terminal Extensions Connect Cables or Different Gauges</p> <p>&gt; <a href="#">Pages 7 to 9</a></p> 
<p>Front Cover Contact Barrier</p> <p>&gt; <a href="#">Page 9</a></p> 	<p>Front Cover Plate Cover Gaps in Mounting Area</p> <p>&gt; <a href="#">Page 9</a></p> 

## Features

- Panel mounting with screws (size 000 holder can also be DIN rail mounted).
- Optional locking inserts to padlock the cover closed.
- Huge variety of terminals for different cable gauges and termination options.
- Several busbar options to create a common between the poles of multiple holders.

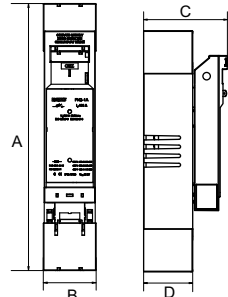
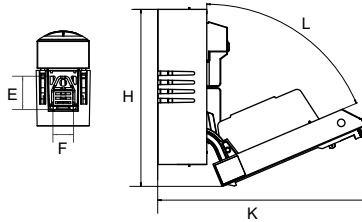
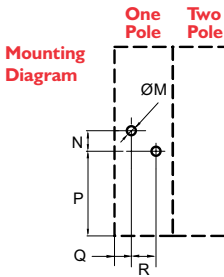
Single Pole Part Number	Fuse Body Size	Ampere Rating	Terminals
FH000-1A-T	000 (00C)	160A	Clamp type 1.5 to 50mm <sup>2</sup>
FH00-1A-F	00 & 00C	160A	M8 screws
FH1-1A-F	1 & 1C	250A	M10 screws
FH2-1A-F	2 & 2C	400A	M10 screws
FH3-1A-F	3 & 3C	630A	M12 screws

**Voltage:** 690VAC / DC (varies by utilisation category, refer QR datasheet).  
**Suit Fuses:** NH Size 000 to 3 (p82-84), NH Battery Fuse size 000 to 3 (p65).  
**Mounting:** Panel Mount (all holders). FH000 is also 35mm DIN rail mount.  
**Front Protection Rating:** Built-in device, open cover: IP20  
 Built-in device, closed cover, measuring holes filled: IP30  
**Size 4 Fuse Holder:** Holders for Size 4 fuses available, please contact sales.  
**Approvals:** IEC 60947-1,3 EN 602947-1,3 CE



NH Blade Fuse

One Pole Disconnect Switch



Single Pole Dimensions in MM

Product Code	A	B	C	D	E	F	H	K	L	M	N	P	Q	R
FH000-1A-T	143	38	80	46.5	9	10	151	180	78°	6	30	64	-	-
FH00-1A-F	235	42	90	45	17	20	192	205	70°	7	-	82.5	8.5	25
FH1-1A-F	318	71	124	67	34	25	273	316	78°	11	25	103	20.5	30
FH2-1A-F	398	79	138	81	49	30	299	350	78°	11	25	116	24.5	30
FH3-1A-F	416	93	152	95	56	40	304	358	78°	11	25	116	31.5	30

**Notes:** Dimensions are approximate, please contact sales to request a manufacturer datasheet with exact dimensions.

## Features

- Panel mounting with screws (size 000 holder can also be DIN rail mounted).
- Optional locking inserts to padlock the cover closed.
- Huge variety of terminals for different cable gauges and termination options.
- Several busbar options to create a common between the poles of multiple holders.

Part Number	Fuse Body Size	Ampere Rating	Terminals
FH000-3A-T	000 (00C)	160A	Clamp type 1.5 to 50mm <sup>2</sup>
FH00-3A-F	00 & 00C	160A	M8 screws
FH1-3A-F	1 & 1C	250A	M10 screws
FH2-3A-F	2 & 2C	400A	M10 screws
FH3-3A-F	3 & 3C	630A	M12 screws

**Voltage:** 690VAC / DC (varies by utilisation category, refer QR datasheet).

**Suit Fuses:** NH Size 000 to 3 (p82-84).

NH Battery Fuse size 000 to 3 (p65).

**Mounting:** Panel Mount (all holders). FH000 is also 35mm DIN rail mount.

**Front Side Protection Ratings:** Built-in device, open cover: IP20

Built-in device, closed cover, measuring holes not broken off: IP30

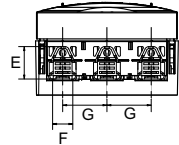
**Size 4 Fuse Holder:** Holders for Size 4 fuses available, please contact sales.

**Approvals:** IEC 60947-1,3 EN 602947-1,3 CE



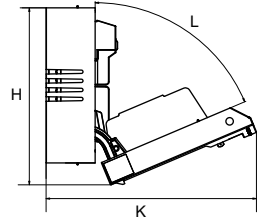
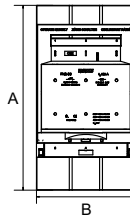
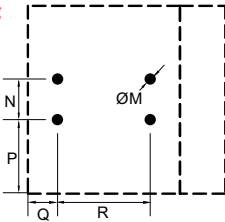
NH Blade Fuse

Three Pole Disconnect Switch



## Three Pole, Four Pole

### Mounting Diagram



### Three Pole Dimensions in MM

Product Code	A	B	C	D	E	F	G	H	K	L	M	N	P	Q	R
FH000-3A-T	143	89	82	46.5	9	10	26	151	181	78°	6	-	64	TBA	50
FH00-3A-F	235	105	90	45	17	20	33	192	205	70°	7	25	70	19.5	66
FH1-3A-F	318	186	124	67	34	25	58	266	315	67°	11	50	90	36	114
FH2-3A-F	398	213	138	81	49	30	66	292	347	67°	13	50	103	41.5	130
FH3-3A-F	416	257	152	95	56	40	82	303	359	73°	13	50	103	48.5	160

**Notes:** Dimensions are approximate, please contact sales to request a manufacturer datasheet with exact dimensions.

Holder Voltage Ratings as determined by Utilization Category

## Single Pole Holders

Voltage Rating	FH000	FH00	FH1	FH2	FH3
230VAC	AC-23B	AC-23B	-	-	-
400VAC	-	-	AC-23B	AC-23B	AC-23B
500VAC	-	-	AC-22B	AC-22B	AC-22B
690VAC	-	-	AC-21B	AC-22B	AC-22B
250VDC	DC-22B	DC-21B	DC-21B	DC-21B	DC-21B
440VDC	-	-	DC-21B / 160A	DC-21B / 250A	DC-21B / 315A

## Three Pole Holders

Voltage Rating	FH000	FH00	FH1	FH2	FH3
400VAC	AC-22B	AC-23B	AC-23B	AC-23B	AC-23B
500VAC	AC-22B	AC-22B	AC-22B	AC-23B	AC-23B
690VAC	AC-21B / 100A	AC-22B / 100A, AC-21B	AC-22B	AC-22B	AC-22B
250VDC	DC-22B*	DC-21B*	-	-	-
440VDC	-	-	DC-21B*	DC-21B*	DC-21B*

Note: \*2 Pole Connection

## Remote Signalling of Cover Position

Part Number	Suit Holders	Description
OD-FH-SK	FH000 to FH3	Indicates if cover is closed or open (1 pc).

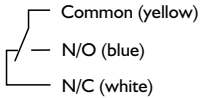
**Switch Rating:** 5A at 250VAC

**Cable Length:** 1 metre

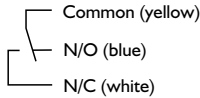
**Mounting:** Possibility of mounting 2 switches into one holder.



State of contacts with open cover  
(Switch lever not depressed):



State of contacts with closed cover  
(Switch lever is depressed):



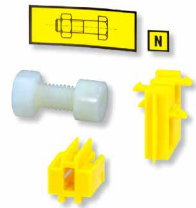
## 2 or 4 Pole Holder Assembly Kits

Attach two fuse disconnect switches together ie.

Join 2 x single pole holders to create a two pole holder.

Join 1 x single pole holder and 1 x three pole holder to create a four pole holder.

Part Number	Suit Holders	Description
OD-FH000-SS24	FH000	2 Holder joining kit (1 pc)
OD-FH00-SS24	FH00	2 Holder joining kit (1 pc)
OD-FH123-SS24	FH1, FH2, FH3	2 Holder joining kit (1 pc)



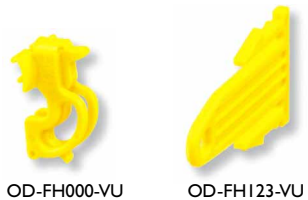
## Front Cover Locking Insert

This insert allows you to secure the front cover closed using a padlock.

Part Number	Suit Holders	Description
OD-FH000-VU	FH000	Locking insert (1 pc)
OD-FH123-VU	FH1, FH2, FH3	Locking insert (1 pc)

**Padlock Hole Size:** 4.5mm

**Notes:** Padlock is not included.



## Clip-on Extended Housing Covers

Clip-on to either upper or lower holder housings to provide more coverage of cabling. Supplied as 1 pc. Order 2pcs if extending coverage of both upper and lower areas.

Part Number	Nbr Poles	Suit Holders
OD-FH000-KPA	3	FH000 (3 pole)
OD-FH00-KP1	1	FH00 (1 pole)
OD-FH00-KP3	3	FH00 (3 pole)
OD-FH1-KP1	1	FH1 (1 pole)
OD-FH1-KP3	3	FH1 (3 pole)
OD-FH2-KP1	1	FH2 (1 pole)
OD-FH2-KP3	3	FH2 (3 pole)
OD-FH3-KP1	1	FH3 (1 pole)
OD-FH3-KP3	3	FH3 (3 pole)



OD-FH1-KP1



OD-FH1-KP3

## Top Connecting Busbars

Bridge input power across multiple 3 pole holders. Busbar provides electrical connection to the same pole of each holder.

Part Number	Suit Holders	Qty Holders	Qty Terminals
CS-FH000-3L2	FH000 (3 pole)	2	2 x 3 = 6
CS-FH000-3L3	FH000 (3 pole)	3	3 x 3 = 9
CS-FH000-3L4	FH000 (3 pole)	4	4 x 3 = 12
CS-FH000-3L5	FH000 (3 pole)	5	5 x 3 = 15

CS-FH00-3L2	FH00 (3 pole)	2	2 x 3 = 6
CS-FH00-3L3	FH00 (3 pole)	3	3 x 3 = 9
CS-FH00-3L4	FH00 (3 pole)	4	4 x 3 = 12
CS-FH00-3L5	FH00 (3 pole)	5	5 x 3 = 15

**Voltage:** 690VAC/VDC

**Busbar Cross-Section:** 50mm<sup>2</sup>

**Busbar Terminals:** Slide left or right within the insulated housing.

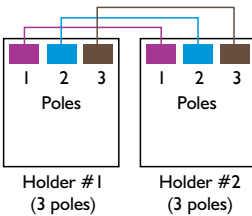


CS-FH000-3L3



CS-FH00-3L3

Busbar connections



Example of a CS-FH000-3L2 busbar connected to 2 x 3 pole holders. The same poles of each holder are electrically connected via the busbar.  
eg. Pole 1 of Holder 1 is connected to Pole 1 of Holder 2 etc.

## Rear Connecting Busbar Adapter

Bridge input power across multiple 3 pole holders. This adapter allows you to connect the holder to 3 x rear busbar rails (not included). Provides electrical connection to the same pole of each holder.

Part Number	Suit Holders
OD-FH000-AL60	FH000 (3 pole)
OD-FH00-AL60	FH00 (3 pole)
OD-FH1-AL60	FH1 (3 pole)
OD-FH2-AL60	FH2 (3 pole)
OD-FH3-AL60	FH3 (3 pole)

**Busbar Spacing:** 60mm

**Busbar Thickness:** 5 to 12mm

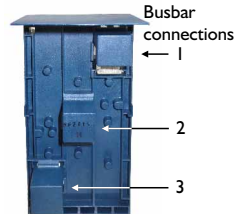
**Busbar Width:** 12 to 32mm

**Cable Outlet:** Bottom or Top.

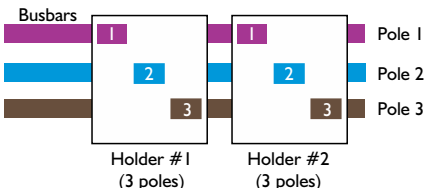
**Ordering:** 1 pc required for each 3 pole holder.



OD-FH1-AL60  
(Front View)



OD-FH1-AL60  
(Rear View)



Example of 3 x rear connecting busbars connected to 2 x 3 pole holders. The same poles of each holder are connected via the busbar.  
eg. Pole 1 of Holder 1 is connected to Pole 1 of Holder 2 etc.

## Terminal Extensions for FH000 Holders

For the connection of Cu/Al conductor of cross section 35 to 95mm<sup>2</sup>.  
Possibility of connecting 2 stranded conductors up to 25mm<sup>2</sup>.

Part Number	Suit Holders	Description
CS-FH000-1NP95	FH000 (1 pole)	Straight terminal (1pc)
CS-FH000-3NP95	FH000 (3 pole)	Straight terminal (3pcs)
CS-FH000-3NV95	FH000 (3 pole)	Long terminal (3pcs)
CS-FH000-3ND95	FH000 (3 pole)	Kick-up terminal (3pcs)



For the connection of 3 x Cu conductors (cross section up to 10mm<sup>2</sup>) to a single terminal pole.

Part Number	Suit Holders	Description
N3xI0-FH000	FH000 (3 pole)	Connect 3 cables to one terminal (3pcs)



## Terminal Extensions for FH00 Holders

Clip terminals for connection of Cu/Al conductor of cross section 2.5 to 70mm<sup>2</sup>.

Part Number	Suit Holders	Description
CS-FH00-1S	FH00 (1 pole)	Terminal extension (1pc)
CS-FH00-3S	FH00 (3 pole)	Terminal extension (3pcs)



Prismatic clamps for connection of Cu/Al conductor of cross section 10 to 95mm<sup>2</sup>.

Part Number	Suit Holders	Description
CS-FH00-1PI	FH00 (1 pole)	Terminal extension (1pc)
CS-FH00-3PI	FH00 (3 pole)	Terminal extension (3pcs)



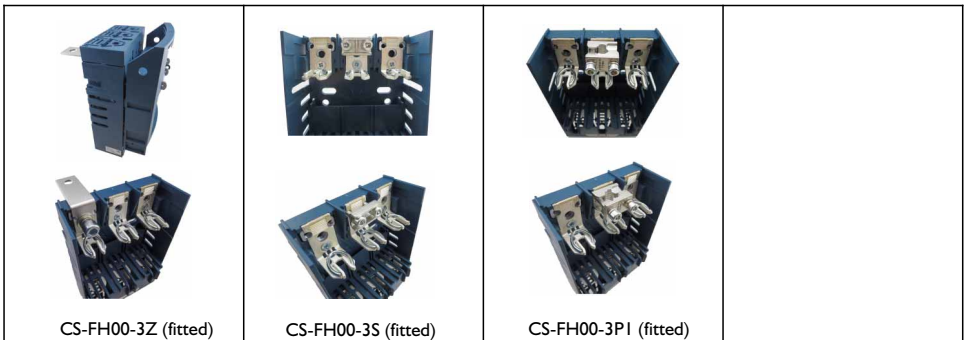
Terminal extension for connection of cable lugs outside the connection space.

Part Number	Suit Holders	Description
CS-FH00-3N	FH00 (3 pole)	Terminal extension (3pcs)



Terminal extension for rear connection.

Part Number	Suit Holders	Description
CS-FH00-3Z	FH00 (3 pole)	Terminal extension (3pcs)



## Terminal Extensions for FHI, FH2 & FH3 Holders

Terminals for rear connection.

Part Number	Suit Holders	Description
CS-FH123-1Z	FH1, FH2 & FH3 (1 pole)	Terminal extension (1pc)
CS-FH123-3Z	FH1, FH2 & FH3 (3 pole)	Terminal extension (3pcs)



## Terminal Extensions for FHI & FH2 Holders

Clip terminals for connection of Cu conductor of cross section 6 to 16mm<sup>2</sup>.

Part Number	Suit Holders	Description
CS-FH12-1SM	FH1 & FH2 (1 pole)	Terminal extension (1pc)
CS-FH12-3SM	FH1 & FH2 (3 pole)	Terminal extension (3pcs)



Clip terminals for connection of Cu conductor of cross section 25 to 150mm<sup>2</sup>.

Part Number	Suit Holders	Description
CS-FH12-1S	FH1 & FH2 (1 pole)	Terminal extension (1pc)
CS-FH12-3S	FH1 & FH2 (3 pole)	Terminal extension (3pcs)



Prismatic clamps for connection of Cu/Al conductor of cross section 70 to 150mm<sup>2</sup>.

Part Number	Suit Holders	Description
CS-FH12-1P1	FH1 & FH2 (1 pole)	Terminal extension (1pc)
CS-FH12-3P1	FH1 & FH2 (3 pole)	Terminal extension (3pcs)



Double Prismatic looping clamps for connection of 2 x Cu/Al conductors of cross section 70 to 95mm<sup>2</sup>.

Part Number	Suit Holders	Description
CS-FH12-1P2	FH1 & FH2 (1 pole)	Terminal extension (1pc)
CS-FH12-3P2	FH1 & FH2 (3 pole)	Terminal extension (3pcs)



## Terminal Extensions for FH2 Holders

Clip terminals for connection of Cu conductor of cross section 25 to 240mm<sup>2</sup>.

Part Number	Suit Holders	Description
CS-FH2-1S	FH2 (1 pole)	Terminal extension (1pc)
CS-FH2-3S	FH2 (3 pole)	Terminal extension (3pcs)



Prismatic clamps for connection of Cu/Al conductor of cross section 16 to 240mm<sup>2</sup>.

Part Number	Suit Holders	Description
CS-FH2-1P1	FH2 (1 pole)	Terminal extension (1pc)
CS-FH2-3P1	FH2 (3 pole)	Terminal extension (3pcs)



Double Prismatic looping clamps for connection of 2 x Cu/Al conductors of cross section 120 to 150mm<sup>2</sup>.

Part Number	Suit Holders	Description
CS-FH2-1P2	FH2 (1 pole)	Terminal extension (1pc)
CS-FH2-3P2	FH2 (3 pole)	Terminal extension (3pcs)





## Terminal Extensions for FH3 Holders

Clip terminals for connection of Cu/Al conductor of cross section 120 to 300mm<sup>2</sup>.

Part Number	Suit Holders	Description
CS-FH3-1P1	FH3 (1 pole)	Terminal extension (1pc)
CS-FH3-3P1	FH3 (3 pole)	Terminal extension (3pcs)



Double Prismatic looping clamps for connection of 2 x Cu/Al conductors of cross section 120 to 240mm<sup>2</sup>.

Part Number	Suit Holders	Description
CS-FH3-1P2	FH3 (1 pole)	Terminal extension (1pc)
CS-FH3-3P2	FH3 (3 pole)	Terminal extension (3pcs)



## Contact Barriers

Increased safety of personnel by reducing potential contact of live parts near cover release handle.

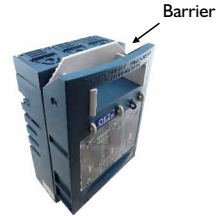
Part Number	Suit Holders
OD-FH000-Z1	FH000 (1 pole)
OD-FH000-Z3	FH000 (3 pole)
OD-FH00-Z3	FH00 (3 pole)
OD-FH1-Z3	FH1 (3 pole)
OD-FH2-Z3	FH2 (3 pole)
OD-FH3-Z3	FH3 (3 pole)



OD-FH1-Z3



Holder with No Barrier



Holder with Barrier Fitted

## Front Cover Plate

Additional covering of free space around the fuse disconnect switch. Fits between body & cover.

Part Number	Suit Holders
OD-FH000-KR	FH000 (3 pole)
OD-FH00-KR	FH00 (3 pole)
OD-FH1-KR	FH1 (3 pole)
OD-FH2-KR	FH2 (3 pole)
OD-FH3-KR	FH3 (3 pole)



Front Cover Plate (fitted to holder)



Front Cover Plate