

CLASS T, EV & EVSE BOLTED FUSE BLOCKS MODULAR

NEW

Features

- Modular design reduces inventory requirements.
- Supplied with nut and belleve washer.
- 200kA (VAC), 250kA (VDC) short-circuit withstand rating.
- 700VAC / 1500VDC approved.
- Sold in pairs for convenience.



Part Number	Ampere Rating	Voltage Rating	Suggested Stud Torque	Terminal Stud Size (Metric)
LSCR001	400A	700VAC / 1500VDC	6.8 Nm	1/4"-20 (6.35mm)
LSCR002	800A	700VAC / 1500VDC	21.6 Nm	3/8"-16 (9.52mm)

Insulator Material: Molded Phenolic (150°C Max)

Terminal Material: Steel, Zinc Plated.

Flammability Rating: UL 94-V0

Ordering Information: Sold as a pair of blocks.

Notes: Fuse not included.

Approvals: RoHS



LSCR001

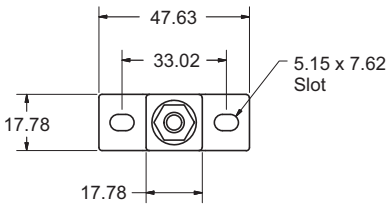
LSCR002

RELATED PRODUCTS:



Fuse Block	Class T Fuse	AE5 500V	AE7 800V	AEX 1000V
LSCR001	70A - 200A	50A - 400A	60A - 150A	-
LSCR002	225A - 800A	-	175A - 600A	175A - 600A

Dimensions in MM



Dimensions in MM

